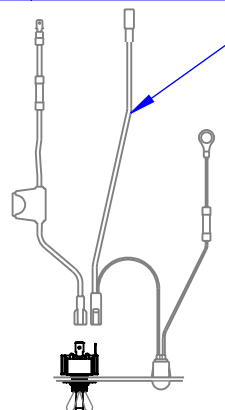
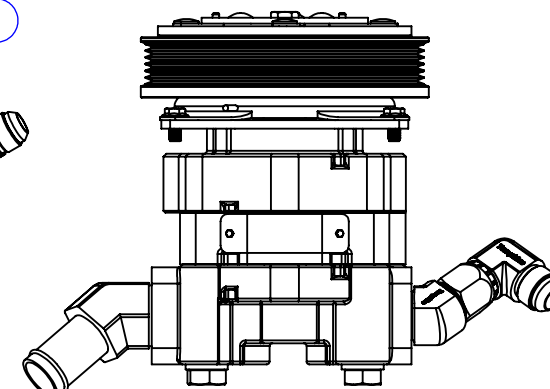
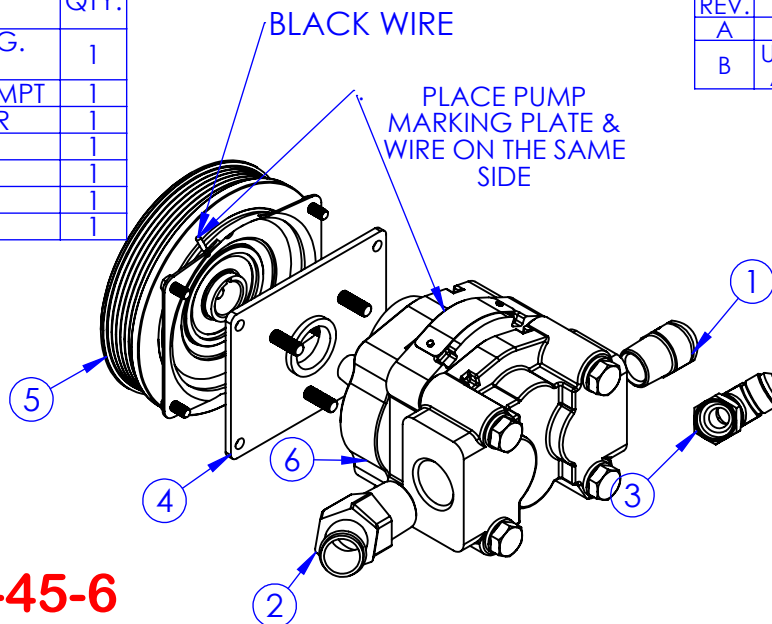


ITEM NO.	PART NUMBER	DESCRIPTION	QTY.
1	AD-6802 10-12	JIC TO PIPE ELBOW 45 DEG. ADAPTER	1
2	AD-6500 10-10	45 DEG ADAPTER BEADED MPT	1
3	AD-4603 16-20	10FJ x 10MJ 90, ADAPTER	1
4	PU-15433 PLATE	MOUNTING ADAPTER	1
5	PU-MANO6D	6 GROOVE CLUTCH	1
6	PU-CP16 65C 05	SIDE PORT PUMP ONLY	1
7	EL-SK-100	PUMP SWITCH KIT	1

REV.	DESCRIPTION	DATE	APPROVED
A	INITIAL RELEASE	3/1/2013	
B	UPDATED PART NUMBERS AND ADDED ITEM NO.7	11/7/2023	KD (BB)



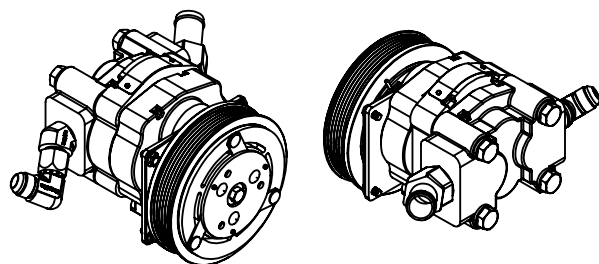
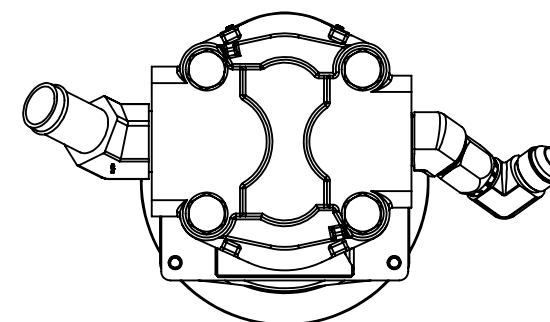
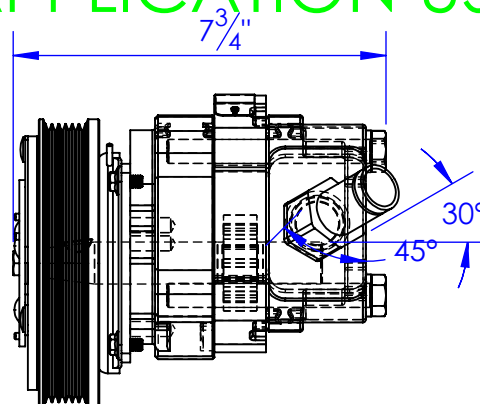
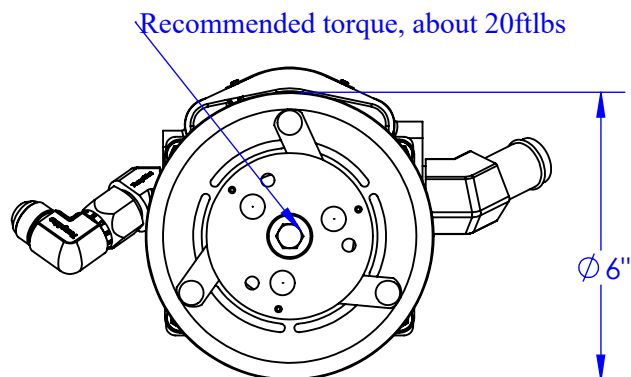
EL-SK-100: QTY 1
"SWITCH KIT, DASH"
SEE DWG 10-0906 FOR
MORE DETAILS



PU-SP4-11-45-6

SPECIAL APPLICATION USE ONLY

0"



PROPRIETARY AND CONFIDENTIAL
THE INFORMATION CONTAINED IN THIS
DRAWING IS THE SOLE PROPERTY OF TRIPLE
C INC. ANY REPRODUCTION IN PART OR
AS A WHOLE WITHOUT THE WRITTEN
PERMISSION OF TRIPLE C INC. IS PROHIBITED.

DIMENSIONS ARE IN INCHES TOLERANCES: FRACTIONAL $\pm 1/16$ ANGULAR: MACH ± 1 BEND \pm TWO PLACE DECIMAL ± 010 THREE PLACE DECIMAL ± 005	
MATERIAL	---
DO NOT SCALE DRAWING	

NAME	DATE
DRAWN HEATH	11/7/2023
PART # PU-SP4-11-45-6	
ASM #	
COMMENTS: 6 GROOVE SIDE PORT PARKER PUMP 45 DEGREE	

P.O. BOX 248,
SABETHA, KS 66534



SIZE A	DWG. NO. 10-0931-09 B	REV. B
SCALE: 1:4	WEIGHT: --	SHEET 1 OF 1